

# CHARMILL

## RESIDENTIAL



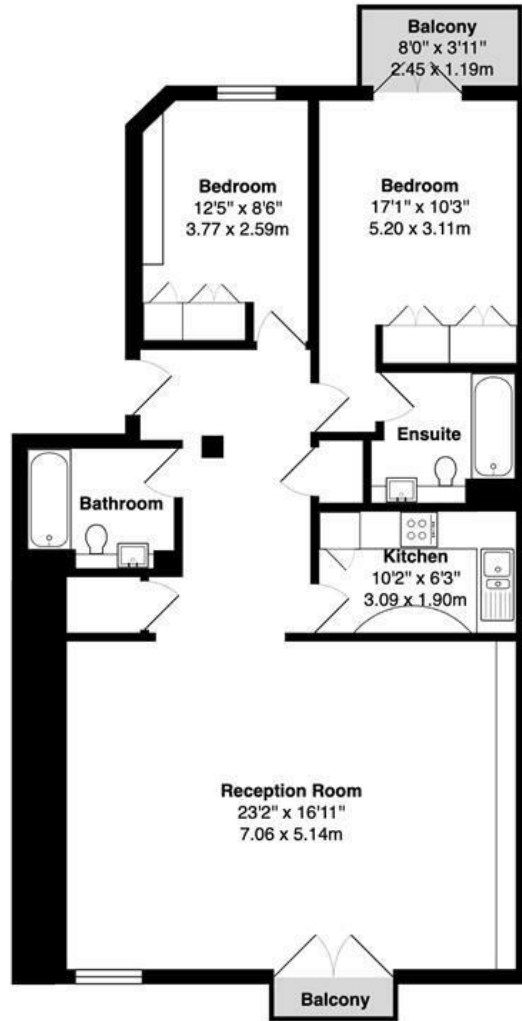
### Maida Vale, Little Venice W9

A spacious two bedroom, two bathroom apartment situated on the third floor of this charming purpose built block in Little Venice. The property comprises a large reception/dining room with wooden flooring, separate fully fitted kitchen, principal bedroom with en-suite shower room, a further double bedroom and a family bathroom. The property further benefits from a 24 hour porter.

Clarendon Court is located moments from the shops, cafes and restaurants on Clifton Road and is just 0.4 miles away from Warwick Avenue station (Bakerloo line). Paddington station is 0.9 miles away which offers Circle, District, Bakerloo and Hammersmith & City lines together with National Rail services and the Heathrow Express providing access to Heathrow Airport in 15 minutes as well as the Elizabeth line connecting you to Canary Wharf in just 18 minutes.

- Two bedroom's
- Two bathrooms
- Wooden flooring
- Spacious reception room
- 24 hour Porter
- Air conditioning

£725



3rd Floor

Clarendon Court, Maida Vale W9

Total Gross Area: 979 ft<sup>2</sup> ... 90.9 m<sup>2</sup> (excluding balcony)

Floor plans are for identification and guideline purposes only, not to scale  
Compliant RICS code of measuring practice

Energy Efficiency Rating		Current	Potential
Very energy efficient - lower running costs			
(92 plus) <b>A</b>			
(81-91) <b>B</b>			
(69-80) <b>C</b>			
(55-68) <b>D</b>			
(39-54) <b>E</b>			
(21-38) <b>F</b>			
(1-20) <b>G</b>			
Not energy efficient - higher running costs			
<b>England &amp; Wales</b>		78	79
	EU Directive 2002/91/EC		

Environmental Impact (CO <sub>2</sub> ) Rating		Current	Potential
Very environmentally friendly - lower CO <sub>2</sub> emissions			
(92 plus) <b>A</b>			
(81-91) <b>B</b>			
(69-80) <b>C</b>			
(55-68) <b>D</b>			
(39-54) <b>E</b>			
(21-38) <b>F</b>			
(1-20) <b>G</b>			
Not environmentally friendly - higher CO <sub>2</sub> emissions			
<b>England &amp; Wales</b>			
	EU Directive 2002/91/EC		

